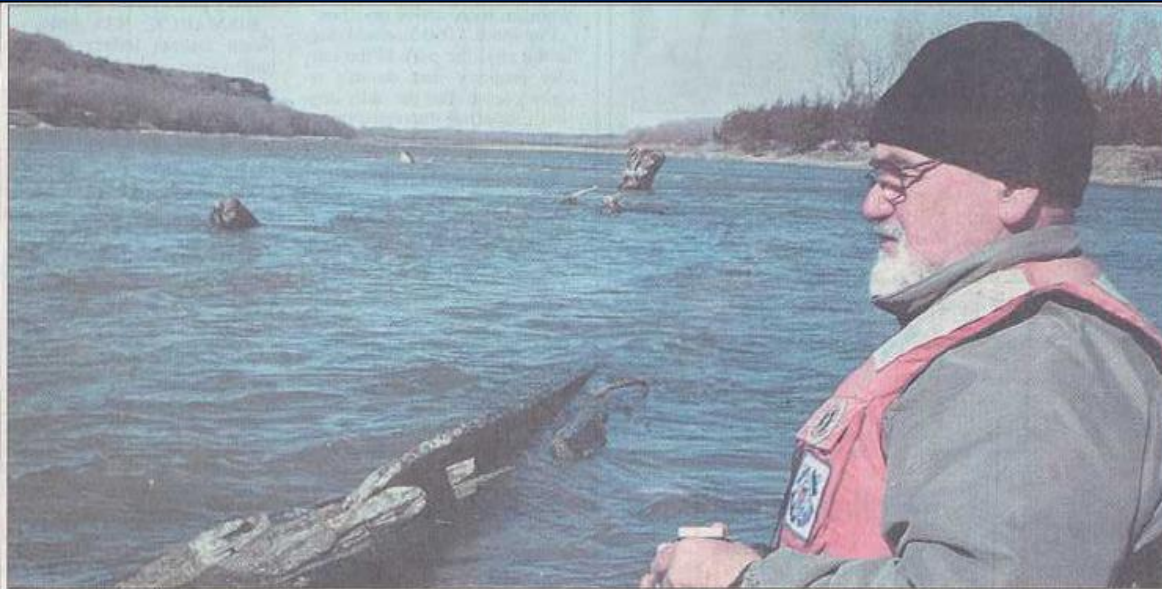




Discovery of the North Alabama

2004 Discovery



For additional photos go to: www.siouxcityjournal.com

University of South Dakota professor **Larry Bradley** surveys the wreckage of what is believed to have been a wooden steambot

from the late 1800s in the Missouri River about eight miles north of Obert, Neb. (Photo by Jesse Claeys)

Local farmers may have found steambot from late 1800s

By **Jesse Claeys**
Journal staff writer

OBERT, Neb. — In an area where horse-drawn covered wagons grace highway signs, one more glimpse into days past could be seen peeking out from the cloudy brown waters of the Missouri River on Saturday.

Mostly submerged in the river on the north side of Goat Island, or about 8 miles north of Obert, a Nebraska village populated by

47 souls, one could see what remained of what scholars believe was once a wooden steambot from the late 1800s.

"I had no idea what it was when I first came up on it. I thought maybe it was an old bridge or something," Clint Pinkleman, a 24-year-old hog farmer from Hartington, Neb., said. "I started to look at it a little better and realized it was an old boat."

Pinkleman, who was recreating on the river, immediately

called his father, Rick, and told him about the discovery. Word started to spread among Pinkleman's circle of family and friends, and numerous rides to the site and Internet research followed.

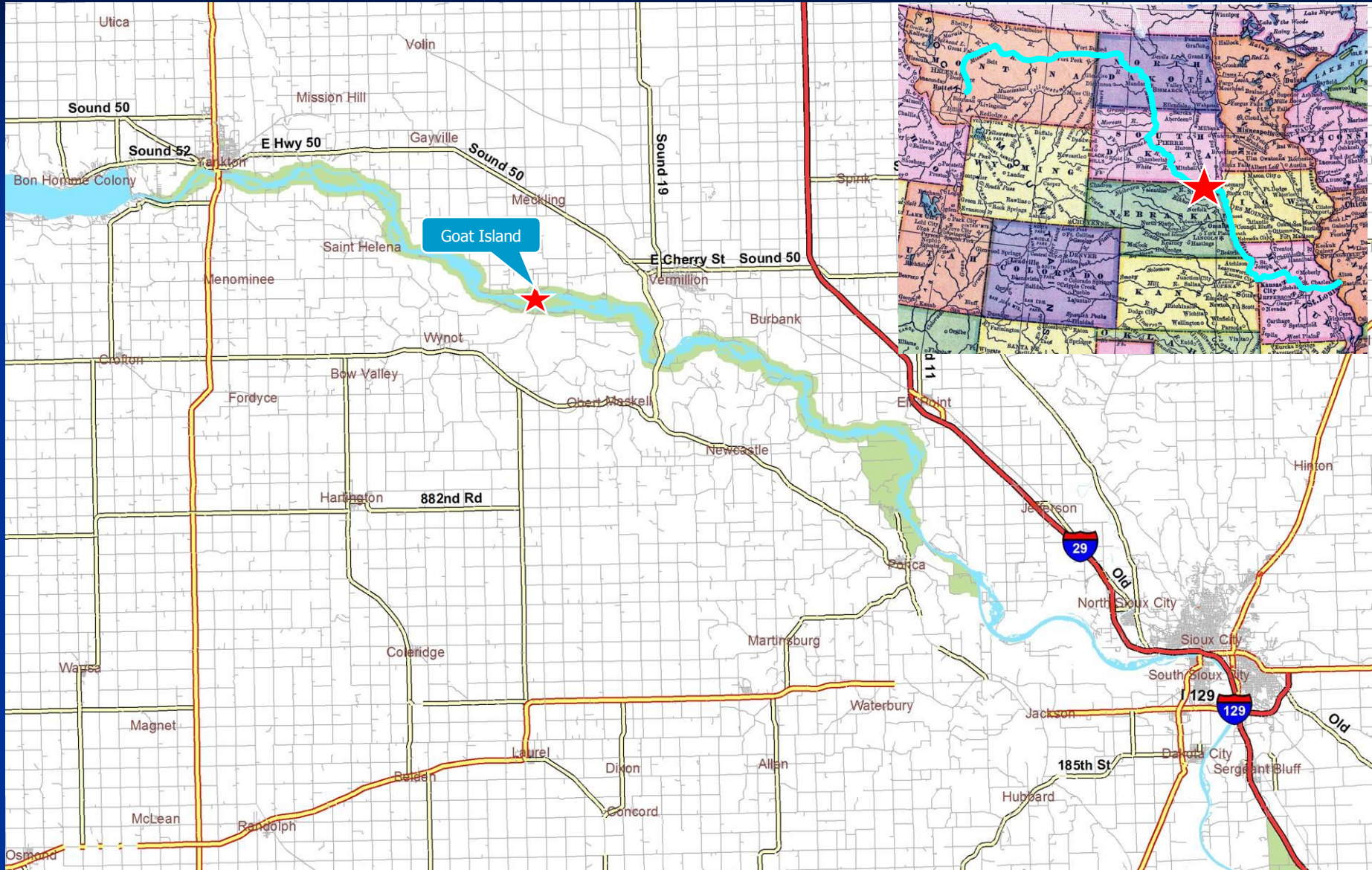
This particular corps of discovery came up with a guess that the approximately 170-foot-long deteriorating wood hull belonged to the North Alabama, a 220-ton vessel that sank on Oct. 27, 1870. Pinkleman decided it was time to call in some big

guns.

On Saturday morning, Pinkleman and his father met three steambot wreck experts at a recreation area north of Obert. South Dakota Department of Environment and Natural Resources geologist Deric Iles, DENR administrator Tim Cowman and University of South Dakota professor of anthropology Larry Bradley, along with

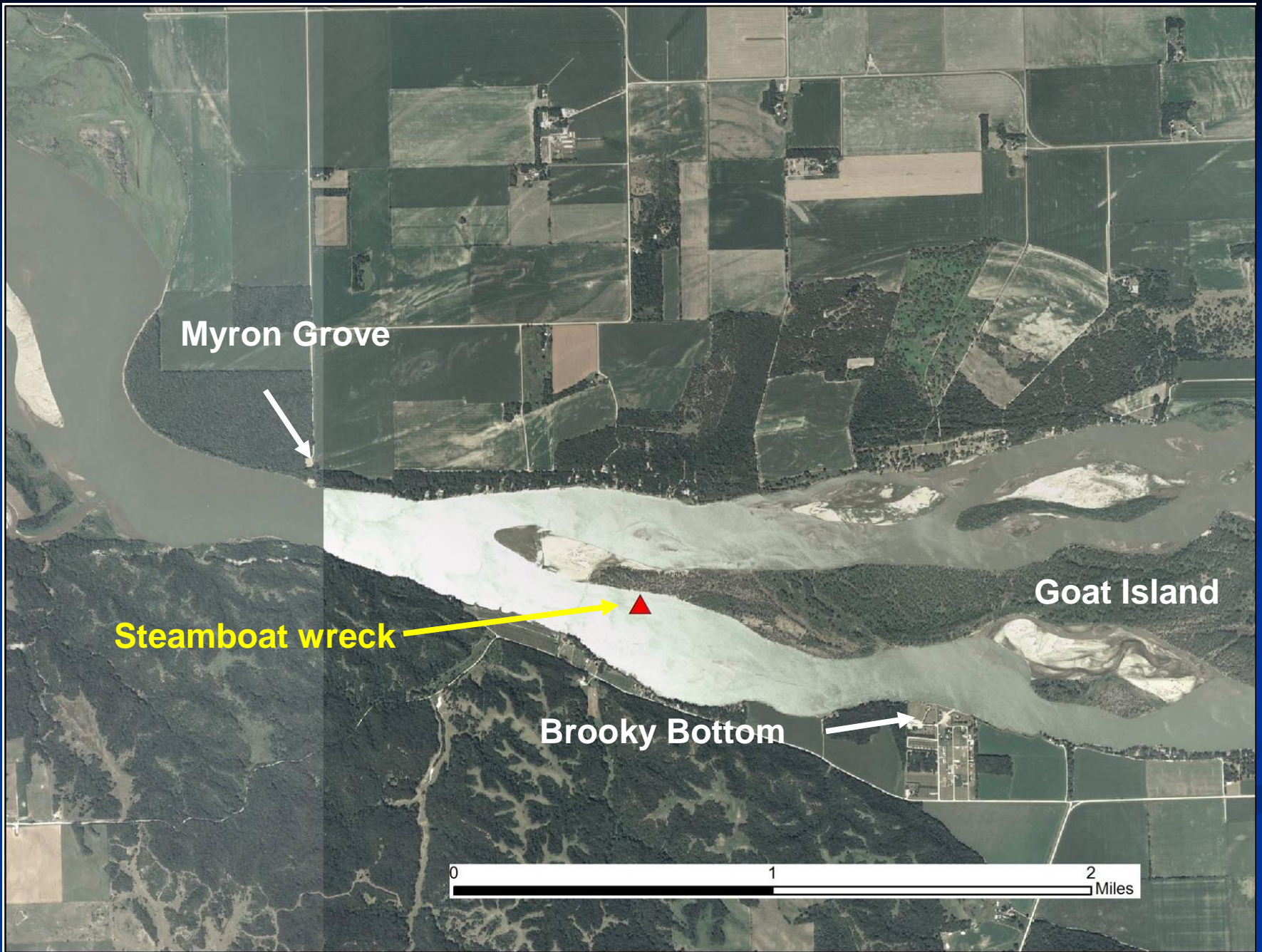
SEE STEAMBOAT
continued on page A3

Wreck Location



Goat Island - 2004





Myron Grove

Steamboat wreck

Brooky Bottom

Goat Island

0 1 2 Miles

Unidentified steamboat?

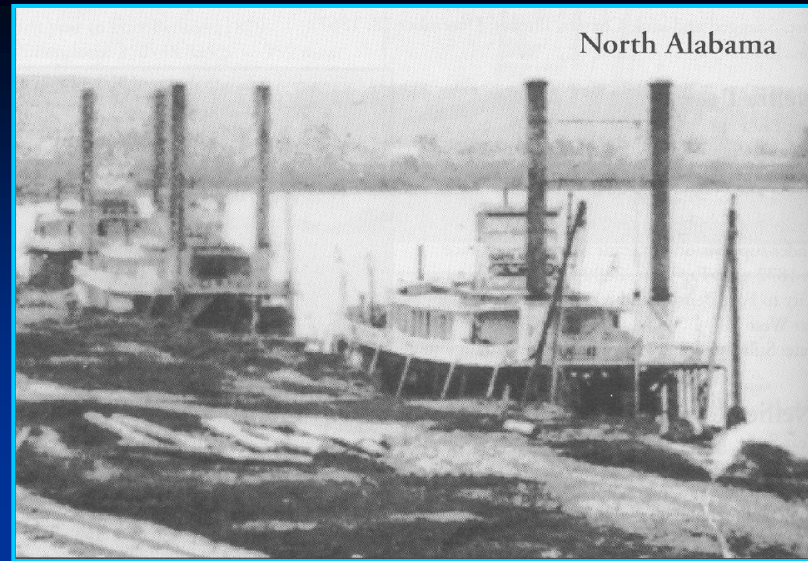


The North Alabama

Type: Sternwheel, wooden hull packet.

Length and beam: 160x32 feet

Destroyed: October 27, 1870



On October 30, 1870, the Daily Journal (Sioux City) reported:

“Sinking of the Steamer North Alabama

Since our yesterday’s issue we have learned some additional particulars of the sinking of the steamer North Alabama, on Thursday evening last at 8 o’clock, two miles above Wiseman’s wood yard and about twenty miles below Yankton. She was making a crossing, that is she was going from the Dakota shore to the Nebraska shore, and about 200 yards from the latter shore **she struck her bow on the end of a sunken log, and went down without advancing another yard**, the log knocking a hole in her nearly eight feet long and two feet wide, sinking her in less than 30 minutes....

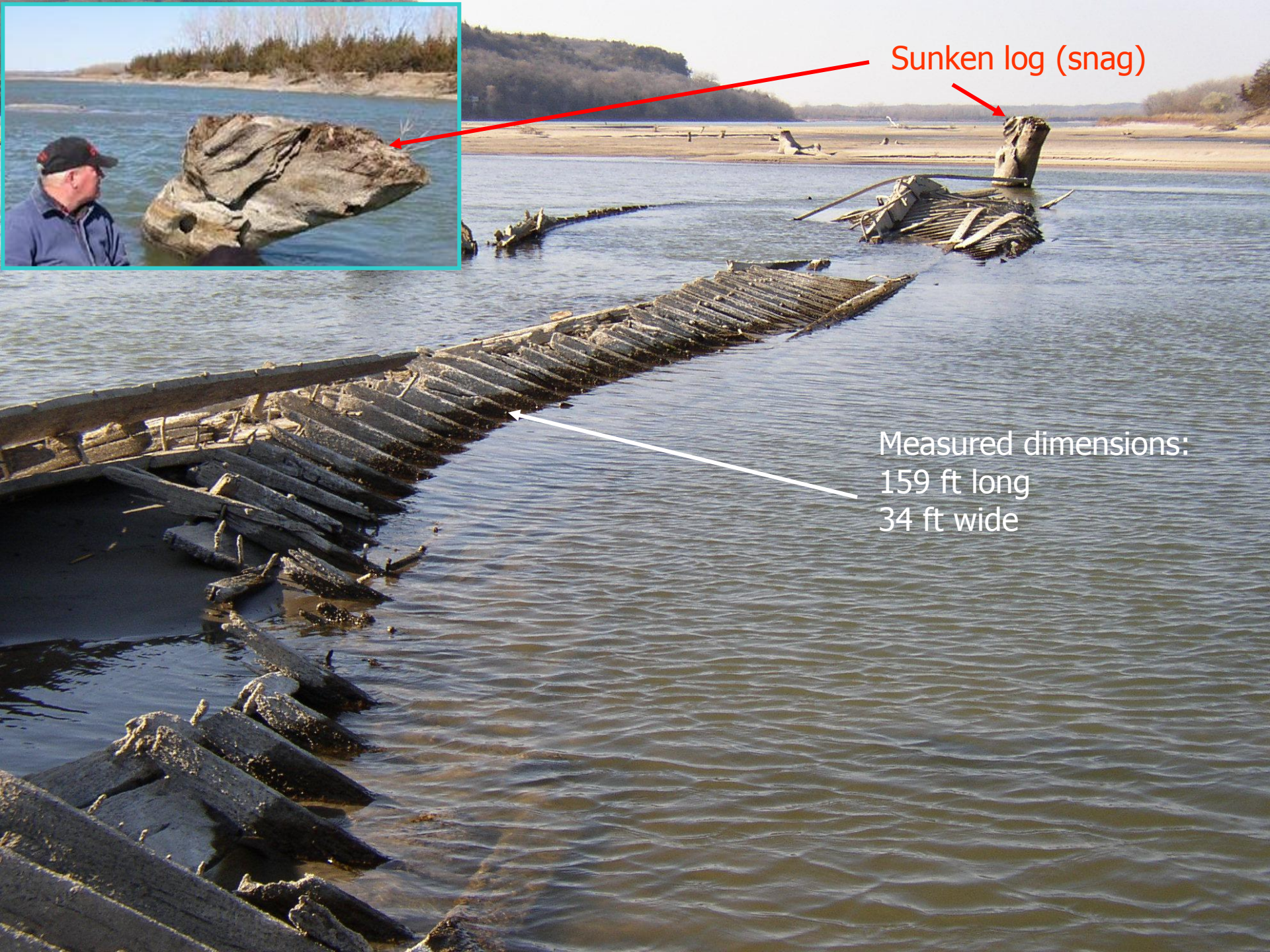


She was the property of the Northwest Transportation Company, and was valued at \$12,000. There was no insurance on her.”



Sunken log (snag)

Measured dimensions:
159 ft long
34 ft wide

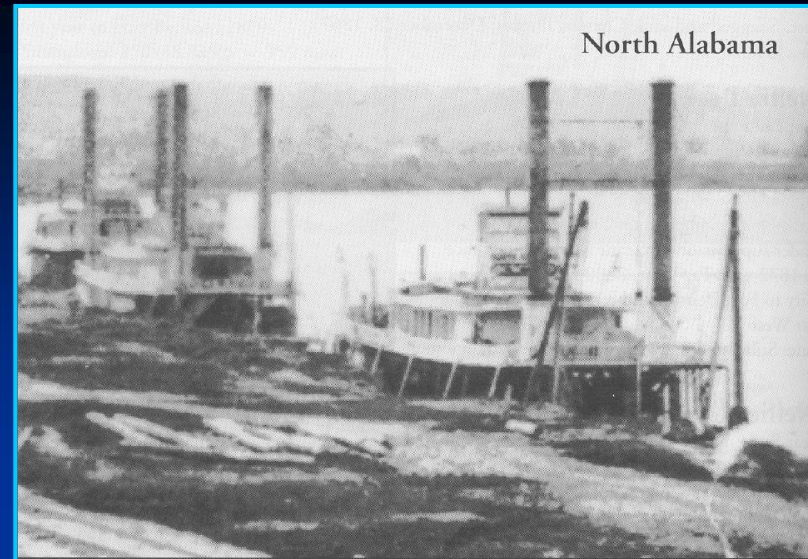


The North Alabama

Type: Sternwheel, wooden hull packet.

Length and beam: 160x32 feet

Destroyed: October 27, 1870



On October 30, 1870, the Daily Journal (Sioux City) reported:

“Sinking of the Steamer North Alabama

Since our yesterday’s issue we have learned some additional particulars of the sinking of the steamer North Alabama, on Thursday evening last at 8 o’clock, **two miles above Wiseman’s wood yard** and about twenty miles below Yankton. She was making a crossing, that is she was going from the Dakota shore to the Nebraska shore, and about 200 yards from the latter shore she struck her bow on the end of a sunken log, and went down without advancing another yard, the log knocking a hole in her nearly eight feet long and two feet wide, sinking her in less than 30 minutes....

She was the property of the Northwest Transportation Company, and was valued at \$12,000. There was no insurance on her.”

1881 U.S. Army Corps of Engineers Map

MISSOURI RIVER

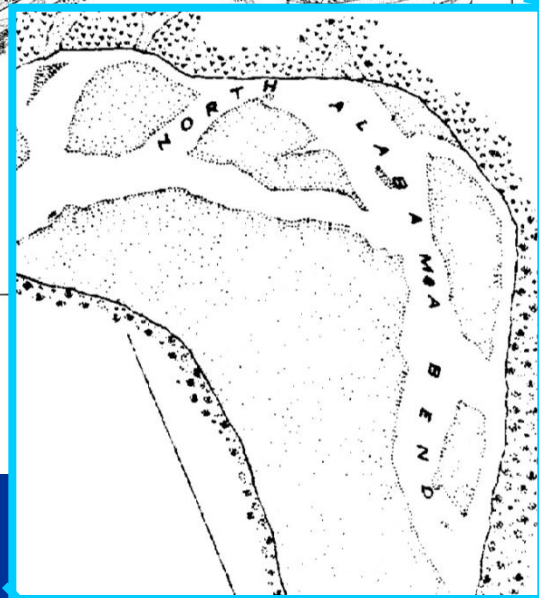
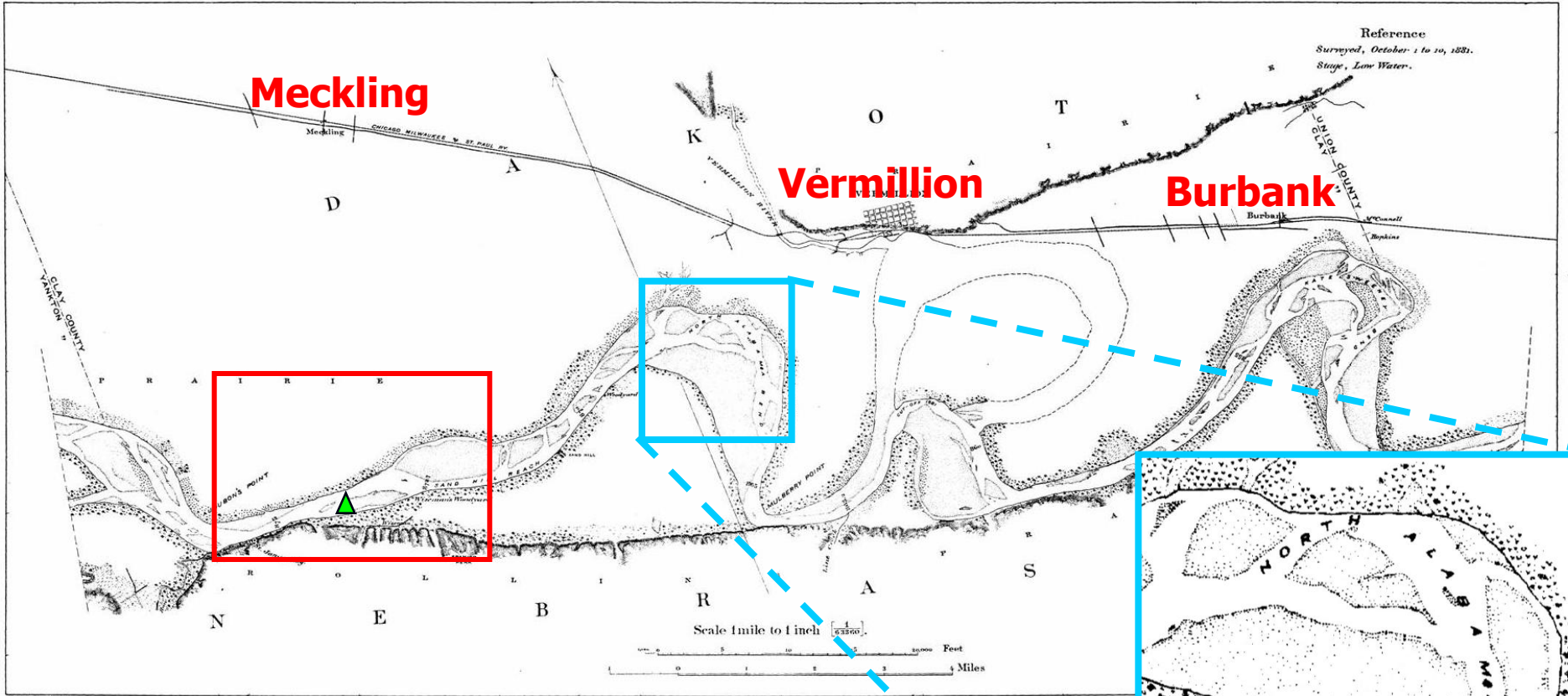
XXIX.

Meckling

Vermillion

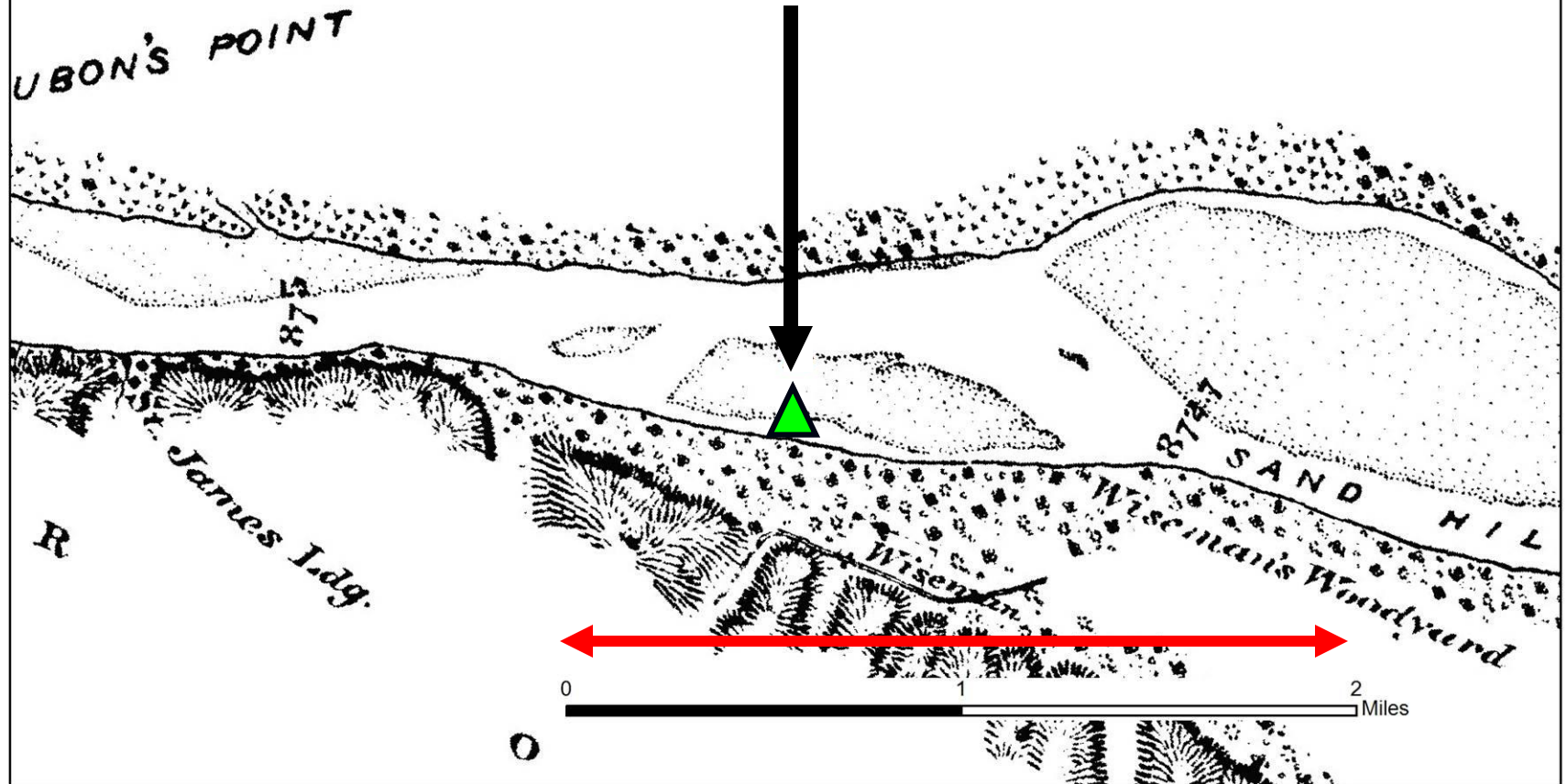
Burbank

Reference
Surveyed, October 1 to 10, 1881.
Stage, Low Water.

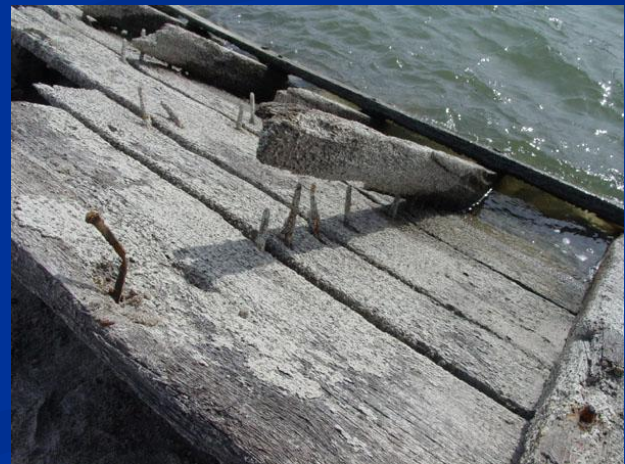


I
E

GPS Location of Steamboat Wreck on 1881 map



March 13, 2004



March 13, 2004



March 13, 2004



7 months later



October 11, 2004

Change from March 13 to October 24, 2004



March 13



October 24

Views toward the bow and stern November 16, 2004



November 16, 2004



Fire brick and cast iron engine parts November 16, 2004



Turnbuckles

November 16, 2004



November 16, 2004

Rudder locations



Starboard Rudder

November 16, 2004



Middle-Starboard Rudder

November 16, 2004



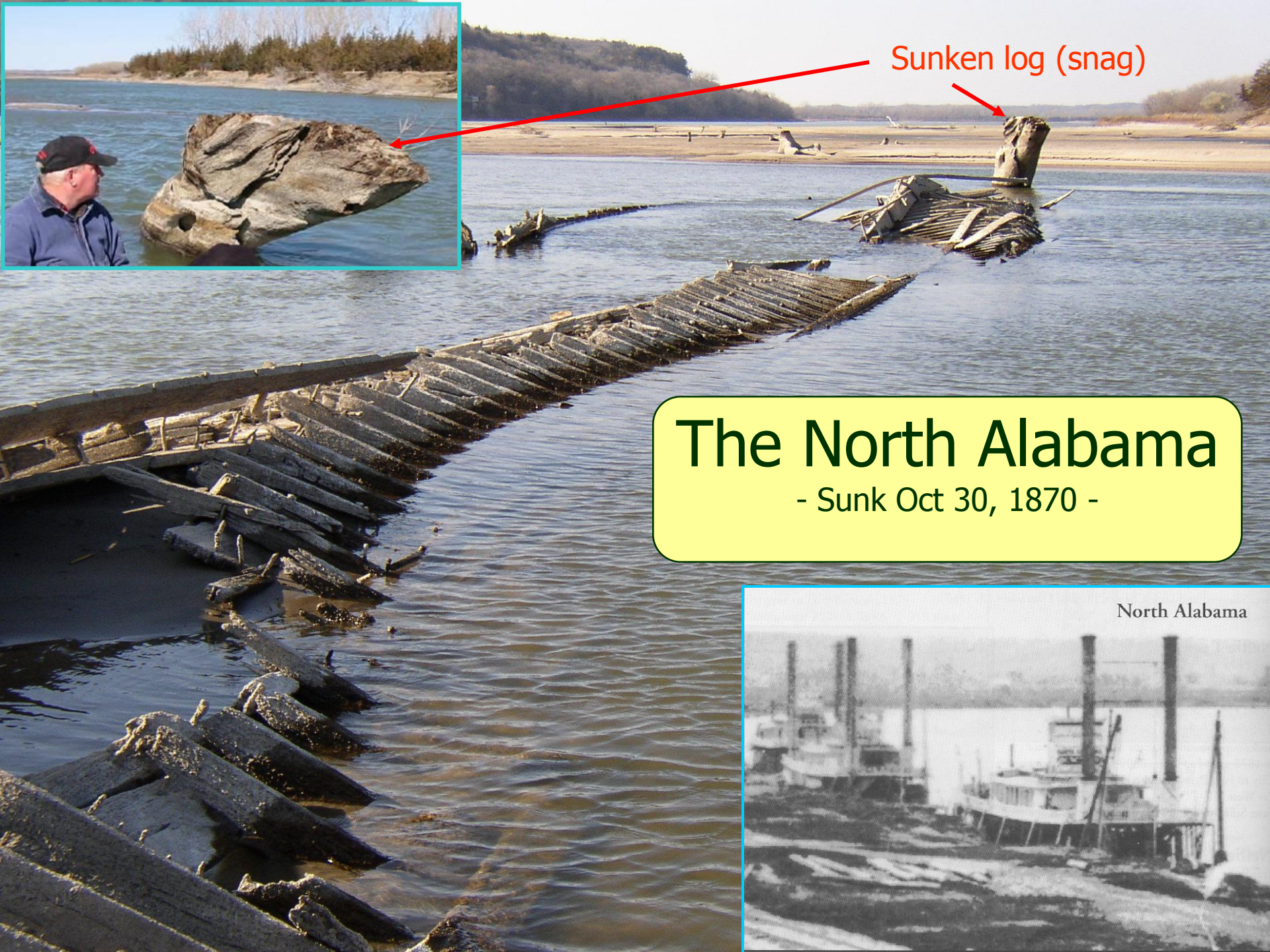
Middle-Port Rudder

March 13 and November 16, 2004



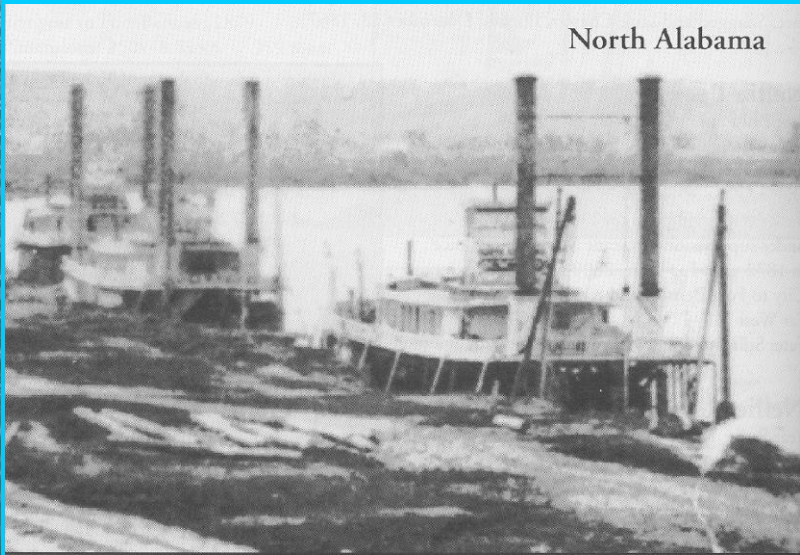


Sunken log (snag)



The North Alabama

- Sunk Oct 30, 1870 -



North Alabama